



THE WITTENBERG DOOR

MARCH 2012

EMMANUEL LUTHERAN CHURCH

BREMERTON, WA

PASTOR'S MESSAGE

INSIDE THIS ISSUE:

PASTOR'S MESSAGE	1
RECOGNITION LUNCHEON	2
CELEBRATING 90+ YEAR OLDS	3
CHURCH HISTORY 1970-75	4
MEMBER'S MEMORIES	6
LENTEN SOUP SUPPERS	7
CHILDCARE CENTER NEWS	8

In case of an Emergency

Please call
Pastor Tim
 on his cell
 phone
286-1090

Our family, with four school-aged children, including two teenagers, was in line at Angel's Buffet in Bremerton. Our trays were heavy with food as we made our way to the only large, empty table, one located in the middle of the room. Seated, with trays stacked to one side, I called the family to prayer. We dutifully bowed our heads, folded our hands and prayed together, "Come Lord Jesus...."

I knew we were a spectacle to the many people who were eating there, and I knew my teens objected to this public display of our faith. On the other hand, I reminded them, it is more embarrassing to sit before Jesus, our plates filled with the food that is His bounty to us, and then, like pigs at the trough, eat without expressing our thanks to Him.

What I did not know was that one of the couples watching us that day had recently visited our church and were now watching to see if we practiced what we (I) preached. Later he said to me that seeing the six of us bow our heads before God to offer Him thanks convinced him that this was the church he wanted to attend. To this day the lives of that couple still impact our lives and church.

In Mark 8 Jesus teaches us, "if anyone is ashamed of Me and my words in this adulterous and sinful generation, the son of Man will be ashamed of him...."

Our piety may feel embarrassing while we live in this foreign land but it is an honor to lift high the name of Jesus even in a public setting. These are moments God can use to touch the lives of others who are precious to Him.

Pastor Tim Cartwright

During Lent

- Fast from fear;
 Feast on faith.
- Fast from despair;
 Feed on hope.
- Fast from depressing news;
 Feed on prayer.
- Fast from discontent;
 Feast on gratitude.
- Fast from anger and worry;
 Feed on patience.
- Fast from negative thinking;
 Feast on positive Thinking.
- Fast from bitterness;
 Feed on love and forgiveness.
- Fast from words that wound;
 Feast on words that heal.
- Fast from gravity;
 Feed on joy and humor.

We Honor our Daycare Staff and Church Staff

On February 5th, following the worship service, the Church Council served a lunch in recognition of our paid staff. The daycare staff attended along with our musician, Brian Kenny and our custodian, Judith Dautenhahn. The council prepared a ham lunch complete with Caesar Salad, rolls, scalloped potatoes, applesauce and dessert. The desserts were baked by various members of the congregation. The members of the council served the staff their food and congregational members dined on lunch. Glen, our president, presented them with cards of thanks and gift cards in appreciation for all they do for our church and the children in our community.



Members of the congregation also enjoyed the luncheon prepared by our council members and desserts prepared by some of our members.

Sitting, left to right, daycare staff members: Kneeda, Carverlynn and Samantha. Standing, Council Treasurer, Judy Armstrong.



TAALC General Convention

The 2012 General Convention of the AALC will be held June 26-29 at the Crowne Plaza St. Louis Airport Hotel, located at 11228 Lone Eagle Dr., Bridgeton, MO.

The theme of the convention is *"Stay Inspired."*

This convention will mark the 25th Anniversary of the Founding of the American Association of Lutheran Churches. Mark your calendar and plan to attend. More information coming soon.

We Honor our 90 + Year Old Members



On February 19th we held a reception following the worship service. To recognize our precious 90+ year olds. We feel very honored to have 9 members in our congregation that are in their 90's. Starting with the top left is Leona Michaels, going counter-clockwise, Dollie Hage, Evelyn Stouffer, Adelaide Jensen, Kay Kannitzer, and Don Sibolt and center Roger and Nell VanDellen. Not pictured is Peter Strom. Of these 9 individuals, 6 are regular attendees. Leona, Dollie, Evelyn, Adelaide and Kay have been long-time members and are a wealth of knowledge concerning our church. Roger and Nell came to the church when Pastor Tim and Carolyn arrived two years ago. They are Carolyn's parents. Their service to the Lord goes way back, including their work they have done in the Caribbean spreading God's word. The week before this reception we lost of one 90+ year olds, Lorraine Shield. Pastor Tim delivered her flower and card a couple of weeks prior to her passing. Special thanks to Marilyn for the handmade cards. *To our 90+ year olds, we love you and are so blessed to have you in our congregation !*

A Rich History of 66 years Chapter eight

1970 brought some major changes to Emmanuel Lutheran. Pastor Crawford (after serving at Emmanuel since 1963) accepted a call to Trinity Lutheran Church in Enumclaw. Pastor Robert L. Peterson and his wife, Evelyn and children,, Mark, Mary and Joy , moved here in 1970 to serve as Emmanuel's Pastor. In 1970 Emmanuel lost a member that was very active and involved with Emmanuel from the very early years. Walter Wuethrick (Mae McConnell's dad and Miki Turowski's grandfather) passed away in 1970.

In 1971 Emmanuel Lutheran celebrated their 25th anniversary. Emmanuel had a dinner on February 6, 1971 in observance of the congregation's 25th anniversary. Hazel Wuethrick was the chairman of this event. The dinner was catered by Our Savior's Lutheran Church. Charter Members received personal invitations and were recognized as the founders of the congregation. All the former pastors and their wives were invited. Mae's mom, Hazel, and her committee received numerous letters and cards from previous pastors. You may be asking yourself why I would include quotes from former pastors from 40+ years ago? As I read through these quotes, I felt that they apply to where we are right now. We can read and learn from these quotes written in 1971.

"I shared the early youth of Emmanuel. Coming to be your pastor in your fifth year of life, I shared with you in the struggles and confusion of discovering your place in the community. Many warm memories are still with me of so many people who rallied to affirm a focus of mission in the service of our Lord and a ministry to His people. You will remember that as a sign of new life and vision, we renamed the congregation Emmanuel, "God with us." I rejoice with you at the evidence that our Lord has been with you." - Rev. Glenn W. Bragstad

"From primitive and humble beginnings, the power of Christ's gospel has brought many marvelous and exciting changes which have centered in, and radiated out from the corner of Perry Avenue and Magnuson Way. God's Word has promised that it will never return void, that when we tell the good news of Christ our Redeemer, results will take place in the heart of the hearer. One of the most magnificent examples of the reality of this, to me is a review of twenty five years in which this has taken place through Emmanuel Lutheran congregation. As you move into the second quarter century of your existence as a congregation of saints, my prayer is that more and more of your members will accept the personal responsibility to tell individuals about our wonderful Savior. Then you will truly be blessed !" - Rev. Knute Lee

"I have gained various impressions as I join with you in celebrating your 25th anniversary. But one clear conclusion is that we are heirs to many blessings from God. The warm spirit of welcome and thoughtfulness has emphasized to me this Christian quality of love. The fellowship and program of Emmanuel also underscore the positive outreach of the congregation. God has been active here these past years. There is much to do in our community and world. May God continue to grant us the vision, the will and the love to faithfully perform His tasks at Emmanuel Lutheran Church." - Rev. Robert L. Peterson

During the first 25 years the following pastors served: The Rev. Gordon M. Trygstad, The Rev. Knute W.D. Lee, The Rev. Glenn W. Bragstad, The Rev. Stanley G. Gunsten, The Rev. Dwight J. Boe and The Rev. O.A. Crawford, Current pastor was The Rev. Robert L. Peterson.

A Rich History of 66 years Chapter eight

Back in 1973 Emmanuel hosted parties for the resident's of Martha and Mary Nursing Home. It's terrific that ELC is renewing those ties once more. Also, in 1973 our dear members, Sylvia and Richard Boyce, celebrated their Silver Anniversary. Their son's David (and his wife) and Steven held a party in recognition of their special day. Richard and Sylvia's son, Steve, was married at Emmanuel on April 2, 1975. Sadly their son, David, went to be with the Lord on May 3, 1975 at the age of 25 years. It was at this time that Richard started our Memorial plaques that hang in our fellowship hall.

In 1975 Emmanuel adopted a family from Vietnam. As the American military were departing, a husband and father, Sung Van Nguyen, was looking for a better life for his family. In Vietnam he had been a successful business man running his own shipyard. They set off for America in a 100 foot vessel with 284 people on board. They managed to get to Singapore Harbor but had to abandon the boat for a larger ship for safe passage. They waited at Camp Pendleton with many other displaced Vietnamese. They got word through Lutheran Immigration and Referral that Emmanuel Lutheran Church had sent an application for a family of 10. The church formed a committee to help get them transported to Bremerton, a second committee made arrangements for living quarters, furniture and appliances. Another committee assisted the family in learning to adapt to living in an American home.

Year	Baptized	Confirmed	Marriages	Burials
1970	34	27	27	23
1971	19	30	19	10
1972	22	33	28	8
1973	23	19	20	8
1974	14	12	22	11
1975	14	20	22	9



On February 13th, 2012 our dear long-time member, **Lorraine Shield**, went to be with the Lord. Lorraine was 94 years old. She was one of our honored 90+ year old members. Lorraine married her husband, Fred, on Oct. 21, 1938. They moved to Bremerton during World War II. They raised 5 daughters;

Sharon, Linda, Susan, Linda, and Mary. Lorraine was a homemaker. She enjoyed fishing and knitting. She was member at Emmanuel Lutheran for many years. She was part of the Women's circle and she was part of the Quilter's group. Those members that knew Lorraine remember her as a quiet but very nice woman and good friend.



Ladies Quilting Group- Lorraine is on the far right.

Member's Memories



Carol Henning has always lived in the Bremerton area. The Illahee home where she and her husband live was the family home she grew up in. She and her husband were neighbors. She shared a sweet story with me about her husband. When Carol was born and brought home from the hospital at 10 days old, her neighbor (across the street) brought her young son over to see the new baby. That young son is Carol's husband, Bob. She and Bob celebrate their 56th anniversary this year. Bob and Carol started a family right away and had 4 sons. The first three sons were only 11 months apart. Carol was a stay-at-home mom raising 4 boys.

Carol grew up attending Bremerton Schools. We think that bussing students is a relatively a new idea? She shared with me that she attended 5 different schools in 12 years and didn't move once. She went to Dewey Junior High School (at the same location as Mountain Middle School). During 7th grade she met her dear friend, Jean Reed. She and Jean have been good friends ever since. Jean Reed's husband and Carol's husband, Bob, were very good friends too. In their younger years, Carol and her husband double dated with Jean and her husband. Bob and Carol have always lived in Illahee with the exception of two years. They surprised their family when they announced that they were going to be moving to Japan. Her husband was offered a temporary position as a Port Engineer on a Naval Base in Japan. It was quite an adjustment moving from little, Illahee to a city with a population over 3 million. They have a group of close-knit friends that were classmates. They meet for a reunion at her house every year. She has classmates that come from as far away as Savannah, Georgia, Hawaii, and Chicago, Illinois.

Carol started going to the church back in the 70's. Her youngest son, Greg, was good friends with David Keller. The Keller family attended Emmanuel for several years. Their son, David, invited Carol's son, Greg, to go to Sunday School. That is how Carol started attending Emmanuel. Carol has been actively involved at Emmanuel ever since. She has served on Altar Guild for about the past 25 years. She explained how there were two women's circles in the church. One would meet during the day, Lydia Circle, and the one that met in the evening was the Sister Circle. Carol was a member of the Sister Circle. She was very involved in the Quilting group. Other members that served in the same quilting group included Dollie Hage, Lorraine Shield, Rose Schmidt, Fran Tewksbury, and Katherine Rundquist. She said that everyone had a job and they coordinated these projects together. Her job was to finish off the edges. Some of the members cut squares, some tied knots. It sounds like they were well orchestrated projects. The completed quilts hung over the backs of the pews. They would sell a few to help cover the costs of batting and shipping. Carol and her husband, Bob, would gather up the quilts and take them over to Seattle where they were boxed up and sent off, through Lutheran World Relief, all over the world. Carol also helped with Vacation Bible School and our Food Bank. In 1979, Carol became the church secretary. Pastor Bob Peterson and Pastor Les Foss hired Carol. After working in the church office one year, her husband was transferred to Japan for two years. When she returned, she worked in the office for another 15 years. She also remembers working for Pastor Gordon Christiansen. If she needed to ask him something after church hours, all she had to do was knock on the door of the little house that sits adjacent to her home. He rented their little house. When she was first hired she remembers working on an old manual long-carriage typewriter, and having to use a mimeograph machine. She loved working at Emmanuel. She was hired to work 4 hours a day, but her four hours usually turned into 6-8 hours.

Her job was very diverse. She did jobs from cleaning the church to printing bulletins. She remembers having to print 200 bulletins each week, and we would like to get to that number again!

Carol's volunteering goes way beyond church. When her children were in school she was involved with their local PTA. She was a recipient of the PTA's "Golden Acorn" award. Carol's sons were involved with Boy Scouts and she was equally involved as their Den Mother. She served as Den Mother from the Cub Scout level on up through the Scout program. She was also active in the 4H organization. She has fond memories of teaching boy's groups how to cook. She taught the girl's groups how to sew. However, she remembers with the girls, that they seemed more interested in boys than they did in sewing. Currently, she delivers "Meals on Wheels" each week. During the Christmas season she helps with Bell Ringing through the Salvation Army. At our county fair, Carol serves as the Superintendent of Horticulture. She is a "Master Gardener" and serves as a mentor to other master gardeners. On a weekly basis she helps with the Heritage Garden at the Kitsap Fairgrounds and the Raingarden in the Illahee Preserve. In the Heritage Garden, produce is grown to donate to our local food bank. Carol is quite an accomplished seamstress. Occasionally she sews for the public.



Carol was the church secretary for 16 years. This was taken in 1984 when the office was in the back of the church behind the Altar.

Carol remembers when she would go shrimping with Carol Reece. One of the members that Carol holds very near and dear to her heart is Dollie Hage. She shared with me when Carol's mother died, Dollie told her not to worry, she would be her mom. So, if you ever hear Carol calling Dollie "Mom", that is where this came from.

Carol just loves the fact that we are now a growing church again. She feels that going to church just makes her week go better. Emmanuel would not be the same without Carol Henning. Thank you for all you have done for Emmanuel and your continued service to our church.

Lenten Soup Supper

This past Wednesday was a our first Lenten Soup Supper. Miki Turowski and Carol Reece treated us to Vegetable Soup and Shrimp/Potato Soup. Gail Campbell brought some bread to share. Thank you to all that are providing our suppers through the Lenten season. Pastor Tim shared a special message and we sang songs that were centered on the theme of the Cross. Please consider joining us at 5:30 each Wednesday through this special Lenten Season.

News from the Childcare

Wow..... March is here already? Where did the time go? This month I wanted to take a moment to introduce the staff of Emmanuel Lutheran Childcare Center to the congregation of Emmanuel.....

Carverlynn Prothero who many of you know, is our Program Supervisor, she is the one who develops and implements the curriculum in the preschool as well as the before and afterschool program. Carverlynn has been with Emmanuel since June of 1999 and has been such an important part of helping to shape the culture of our Center.

Kneeda Williams is our evening Supervisor. She was with Emmanuel for a couple of years and then left to have her daughter, Lillian. Kneeda returned the fall of 2009 and has continued to be a dependable and reliable employee of Emmanuel.

Samantha Brown has been with Emmanuel for three years now. Samantha who goes by "Sam" is one of our morning teachers. She is very instrumental in helping our preschool friends prepare for kindergarten. Sam definitely has a passion for what we do here at Emmanuel and is very much appreciated.

Brandee Haynes has also been with us for three years now. Brandee is one of our morning teachers. She works with the 2.5 and 3 year olds. Brandee is VERY energetic and the children love it and love her.

Nick Thomas has been here at Emmanuel for three years as well. Nick works in the evening with our school-age children, and I could not imagine a position more fitting for him. Nick is WONDERFUL with our school-age children, his energy and patience with the children is such a blessing to us all.

Laura Matta is new to our program, she has been with us for about 4 months. Laura is still learning the ropes but she is very upbeat and energetic, which is always a plus when working with young children. We are very happy to have her here at Emmanuel.

Belinda Matta is also new to our program, and she brings a quiet comfort to the program. Belinda is British and has an accent and the children love it! Belinda offers a lot of experience to our program and we are thankful to have her here at Emmanuel.

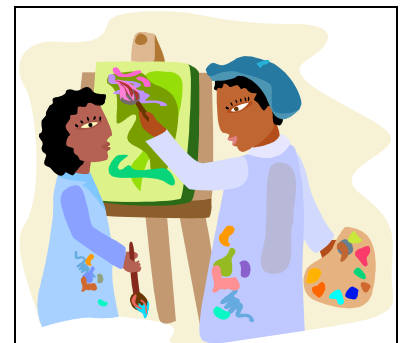
Mikhail Cedzich is the newest addition to our program. Mikhail attended Emmanuel when she was in first/second grade and now she works here. Mikhail shares with the children of our program, stories of when she attended, and the children really enjoy them. I feel very blessed to have Mikhail here and more importantly, I feel blessed that she has chosen to be here.

Well that is our **WONDERFUL.....LOVING.....CARING** staff of Emmanuel!
We are very blessed!

Thank You!

Chelette Williams

Director



March Birthdays

- 5Chelette Williams
- 19.....Melody Knight
- 19 Diona Busby
- 25Kneeda Williams
- 25DeWayne Kalista

March Anniversaries

- 18Steve & Judy Armstrong
- 20Mark & Colleen Ditlefsen

April Birthdays

- 5Richard Boyce
- 10Carolyn Cartwright
- 10Nell Van Dellen
- 12Gail Campbell
- 15.....Glen Adrig
- 15Colleen Ditlefsen
- 17Judy Armstrong
- 17Lamonte James

April Anniversaries

No anniversaries

Note: If I have a date incorrect or have left your important date off of the calendar, please let me know. Sharie @ 377-2448 or gadrig@comcast.net

Members serving in March

- Altar GuildSharie Adrig
- ReaderBill Erickson
- Sunday SchoolCarolyn Cartwright
- Mary Moen
- Judy Armstrong
- Judith Dautenhahn

Members serving in April

- Altar Guild Jean Reed
- Reader Carol Henning
- Sunday SchoolCarolyn Cartwright
- Mary Moen
- Judy Armstrong
- Judith Dautenhahn

Check us out at

<http://www.elcbremerton.org>

Don't forget that we offer opportunities to study your Bible.

For Adults: Sunday 9:00 AM —Galatians
Wednesday evening Bible Studies will resume after the Lenten Season.

For Children: Sunday School 9:00 AM

If you need to contact Pastor Tim Cartwright you can call—286-1090.

If you have a prayer request for the prayer chain call Sharie Adrig 377-2448 or Judy Armstrong 479-4892.

Any comments or questions about the newsletter