



THE WITTENBERG DOOR

APRIL 2011 EMMANUEL LUTHERAN CHURCH BREMERTON, WA

PASTOR'S MESSAGE

"...He is not here" Matthew 28:6

"Dear God, why are You so often not where I need You to be?

When my child fell sick with a high fever and we had to rush him to the emergency room.....

When my best friend stopped speaking to me.....

When we were struggling to keep our marriage going

When I lost my job

When my spouse was diagnosed with cancer

You could have been there. You could have made all those things right. But it seemed like You were not here."

"My child, know this, I love you very much. I would never forsake you. Know this also, I am familiar with your suffering. I suffered on the Cross of Calvary. I cried out to the Father, feeling as if He was not here for me. But He was there. That did not mean I could escape my death on the cross.

You see suffering, like sin, is woven into the fabric of the nature of this broken world. You too experience suffering, but I am here for you.

Yes, I know sometimes you would like me to fix all the broken parts of your world, and when I don't, it feels like I am not here for you. But *I am here*, I am not among the dead, I am with you. Go beyond your feelings and trust my promise, and lo, I am with you always, even to the end of the world."

(Matthew 28:20)



Did you know? A couple of weeks ago Jean Reed became a member of a very elite group. She reached the magic number of 9 gallons of blood that she has donated. Way to go Jean. You have helped many.

INSIDE THIS ISSUE:

PASTOR'S MESSAGE	1
MEMBER RECOGNITION	1
CHURCH HISTORY 1945	2
CHURCH 1946-1948	3
MEMBER'S MEMORIES	4
CHILDCARE REPORT	6
BIRTHDAYS & ANNIVERSARIES	7

In case of an Emergency

Please call
Pastor Tim
on his cell
phone
286-1090

A Rich History of 65 years Chapter One

Prior to WW 2, Manette had been a small community of 1,000. After the war broke out it grew to a population of 30,000. People moved here from all corners of our country. Not only were there Lutherans searching for a place to worship, but also those who were unchurched. A young mission pastor, Gordon Trygstad, answered a call and moved his family to Manette. Church services, Bible studies and Sunday School was held at various private homes. The children's Sunday School started with only one student, but with prayers and faith it grew. The first altar consisted of one small card table. Originally the church was called **Manette Lutheran.**

The Ladies Aid Society was very active and instrumental in getting things started. I would imagine that there were more women involved because men were off to fight in the war.

"Holy Thursday, April 18, 1946, was the first Communion in the church, Lenten Services were held."

The Ladies Aid decorated for the Palm and Easter Sundays. There were so many people, that they had to hold two services. These services were held in the Pastor's home. The Ladies Aid had a bake sale to raise money for the Church Building fund. Because of rationing, members donated Sugar Stamps. They raised \$51.50. At that time, that was a great deal of money. They had outgrown the Pastor's residence and a larger meeting place was needed. They tried to meet at an East Bremerton school. After several attempts and meetings with the school board, their requests were rejected.

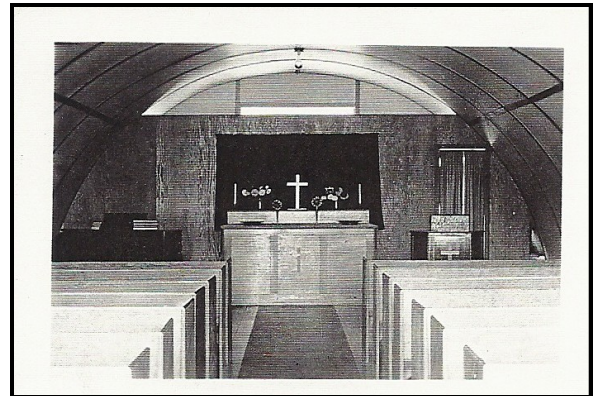
By May 1946 they were desperate. They were able to purchase from the war surplus in Tacoma a Quonset Hut for the price of \$450. "This seemed like a great deal of money to us and the total amount had to be raised within ten days. "

After the Quonset Hut was purchased the men and boys worked very hard to prepare the grounds for the church.



Our first chapel purchased in May 1946 from War Surplus. It cost the members \$450.

The chapel was dedicated in August of 1946. The 1st confirmation class was started in Jan. 1947. There were eight young people.



With hard work the Hut was turned into a chapel.

Work went into turning this hut into a church. The first altar cloth was hand-woven by Nuns in Bombay and sewn by two women of the church. A plywood floor was installed and men made pews for the hut.

A Rich History of 65 years Chapter One

The church members again approached the School Board about renting the auditorium of Kegel School to accommodate the 100 + Sunday School attendees. Permission was granted. Sunday School was held in the school until the church was completed.

Evelyn Souffer remembers there being 300 students at one time in Sunday School.



The first church building and parsonage are completed. Does it look familiar? Yes, it is the same two structures.



Sunday School Attendance was so high the church had to rent space from a local school.

“Our second anniversary found us with a membership that had grown to 150 and a Sunday School enrollment of 140.”

At this point there were two pastors, Pastor Blake and Pastor Trygstad. Services were being held in the Sheridan Park Community Hall and the two services in the “Quonset Hut” chapel. Around the time of the 2nd anniversary the Quonset Hut congregation decided to break off from the Sheridan Park congregation, and at this point Pastor Blake left. In March of 1948, Pastor Trygstad received a call from Vancouver BC and left. There was an interim pastor until Pastor Knute Lee accepted the call to be their new leader.

Labor was donated and the parsonage and church were built. The church was built of Pumice block with a gabled roof. The first event held in the church was a Sunday School Christmas Program in Dec. 1948. A kitchen shower was held to supply the kitchen.

“Finally the great day arrived. Our church was dedicated June 5, 1949. From the lowly beginning of a Bible Study of less than 10 persons in the fall of 1945 to a \$50,000 church in June of 1949 shows what the Faith of a few and the power of God is able to accomplish.”



“The Faith of a few and the power of God.”

Watch for Chapter two in the May Newsletter.

Member's Memories

Eloise Pudas -
Member since
1950



Eloise and her husband, Vern, joined in 1950 but attended Emmanuel since 1947. She has some very fond memories of Emmanuel. Both she and her husband served on Council. She taught Sunday School on the second level of where our current Fellowship Hall is today. If you have noticed the wooden signs hanging on the exterior of the church (the "Welcome to Emmanuel" sign and the "Secretary's Office" sign) these were handcrafted by her husband, Vern. At one time Emmanuel had a Basketball team. Eloise's husband was the coach and our own Mark Stouffer and Eloise's son, Terry, were part of the team. Eloise remembers worshipping in Quonset Hut. Her husband helped with building the church buildings and helped roof the church.

**Thank You,
Eloise and Evelyn for your
years of dedication to our
Lord and Emmanuel**



Evelyn Stouffer-
Member since
1948

Evelyn and her husband joined Emmanuel in 1948. She has seen so many changes over the years. She said that the kitchen used to be in the area where we currently teach Sunday School. Even after the first structure was built the Quonset Hut sat adjacent to the church. During that time the Quonset Hut served as a Fellowship Hall hosting potlucks and activities for cub and boy scout troops that were connected to the church. Alex Sutherland was very involved in Scouting at the church. Evelyn remembers two women that followed her out of church one day and asked her why she was always in such a hurry to leave. At that time, they invited her to sing in the church choir. She became a member and sang with them for many years. She mentioned that the Ladies Aid was a very active group. There were so many women in the church, and they met weekly in small groups called circles and once a month they met in one large group called the Ladies Aid. She recalls a large annual banquet that had so many people, that they had to meet at George Dewey Junior High School.



Hear Ye !!, Hear Ye !!



All are welcome !!!!

Do You Know what is happening every Sunday morning at 9:15? We are giving you an opportunity to learn more about the Bible and it's teachings.

**We have opportunities for all,
Young and Old.**

I guarantee that the children will have a good time singing, creating an art project and learning more about our Bible and it's teachings.

Thank You to Carolyn Cartwright and her assistants, Judith and Sharie for your teaching in March.

Not only that, but after Easter there are even more opportunities to study the Bible, with our Wednesdays evening class at 6:30 for adults.

Thank You Pastor Tim for your dedication, and for your valuable teaching to us during your messages and in the adult Sunday School classes.

We hope to see you next Sunday.

Your Help is Still Needed !

There is still more work to be done outside so if you are interested in helping in beautifying our grounds let Glen Adrig know. (377-2448)



It's hard

to say

Good Bye !!!!



Alex and Geri Sutherland are leaving us. They are moving back to Colorado to be near their daughter. They have been long time members of Emmanuel and renewed their membership last year. They have been very active. They faithfully attend our Wednesday night Bible studies, and have kept the food bank supplied with their gifts. They made generous donations to "Operation Christmas Child" as well as helped with packing the shoeboxes. Geri has been an active member of Altar Guild, always willing to help wherever help was needed. She helped during the holidays by packing our food baskets and also assisted with the collating of the church directories and our monthly newsletters. Alex always greeted us with his wonderful smile and handshake. ***We love you and will dearly miss you.***

A Big "Thank You"

On April 2nd, at 9:00 am you may have seen several members working hard around the church inside and out. Many jobs were accomplished. Inside: our pews, lectern, pulpit and Baptismal font were scrubbed down, the pews were vacuumed, the glass bricks in the sanctuary were scrubbed down as well as windows and glass in the Narthex. The kitchen was scrubbed and re-organized. Outside: Trash was picked up, shrubs were trimmed, part of the parking lot and side walks were power washed. You may have even see Lamont with a blower doing the final clean up outside. There is still more to do but, it is a start. **A special thank you to Gladys, Steve, Jean, Mary, Sylvia, Richard, Denise, Lamont, Chelette, Lilly, Carolyn, Glen , Sharie and Pastor Tim !**

From the President : Glen Adrig

I would like to personally thank all of you for the support that you have shown to me and to our church as we grow together. I am particularly impressed with the way that you have all accepted the changes that we have made in such a short time. A few more changes are still in store for us, but please be assured that they are all being made with the goals of both enhancing our worship experience, and towards providing a more positive and visible presence in our community.

I could say that our goals for Emmanuel Lutheran can be summed up as follows: “We look to the lessons of our past, to bring positive changes for our future”



Daycare Spaghetti Dinner and Talent Show

There was a wonderful turn out for the dinner and talent show. Extra tables and chairs had to be moved in to accommodate all of the guests. The food was wonderful and it was so much fun to see the children perform for us. It was a delightful evening .

Sharie Adrig –editor



Emily led us in Grace

News from the Childcare Center

All I can say isAWESOME! The Childcare “Family Night—An Evening with the Stars,” was a huge success!

It was Food, Fun and Fellowship at it’s best! I want to thank all of the church members who came out to support the childcare’s fun night. It really meant a lot to me and the rest of the staff. Thank You !

The month of April will provide many trainings and continuing education opportunities for the staff of the Emmanuel Childcare. A few of the trainings being offered this month include “Getting to the Root of Challenging Behaviors” as well as a class on “Brain Development.” The staff looks forward to attending these trainings.

In our Pre-school classrooms this month, the theme is “Spring.” The children will go on a nature walk gathering leaves to create a beautiful collage.

April 11th—15th is “The Week of the Young Child.” We will celebrate this wonderful occasion about creating “all about me” posters for each child and posting them around the childcare for everyone to enjoy.

On Friday, April 22nd we will have an Easter egg hunt on the playground (weather permitting). We also hope to have a special visit from the Easter Bunny.

Throughout the whole month we will be talking about the true meaning of Easter and the love that our Lord has for all of us.

On one final note, we are pleased to see the growth of our Pre-school classrooms over the last two months. RIGHT ON !

The staff and I are so happy and proud to be able to provide a loving, Christian, learning environment for the children who need us. We are able to do this because of the love and support of this congregation.

Thank You Emmanuel !

God Bless !

Chelette Williams

April Birthdays

5Richard Boyce

10 Carolyn Cartwright

10 Nell Van Dellen

12 Gail Campbell

15 Glen Adrig

17 Judy Armstrong

May Birthdays

1Adelaide Jensen

2Stephanie Johnson

16 Nancy Kerlee

17 Leona Michaels

May Anniversaries

18Roger & Nell VanDellen

21 Loyal & Gail Campbell

Note: If I have a date incorrect or have left your important date off the calendar, please let me know. Sharie @ 377-2448 or gadrig@comcast.net

Members serving in April

Altar Guild Carol Henning

Sharie Adrig

Reader April Mills

Sunday School.....Stephanie Johnson

Judy Armstrong

Members serving in May

Altar Guild Jean Reed

Reader Tim Cartwright Jr.

It's not too late to order an Easter Lily or an Azalea to help decorate our altar for Easter Service. If you are interested in purchasing flowers, please call Carol Henning at 377-6125



Check us out at
<http://www.elcbremerton.org>

*If you need to contact Pastor Tim Cartwright you can call-286-1090.
If you have a prayer request for the prayer chain call Sharie Adrig-377-2448 or Judy Armstrong-479-4892.
Any comments or questions about the newsletter call Sharie Adrig-377-2448*